



SARAYA

SUNREEF POWER 60



YACHTSALESCO.COM



SARAYA

A MASTERPIECE OF ELEGANCE & PERFORMANCE

Saraya is an extraordinary Sunreef P60 power catamaran presenting in impeccable, as-new condition with an unmatched level of sophistication and innovation. Crafted for the discerning connoisseur, she is a seamless fusion of timeless elegance, transoceanic capability and cutting-edge luxury.

Renowned for its stability, efficiency, and spaciousness, the Sunreef P60 is the ultimate long-range power catamaran.



Renowned for its stability, efficiency, and spaciousness, the Sunreef P60 is the ultimate long-range power catamaran.

Saraya's meticulously designed 4-stateroom layout, each with a private ensuite, ensures a serene sanctuary for every guest, while two dedicated crew cabins guarantee seamless service. The expansive saloon and cockpit—linked by sliding glass doors—create a fluid indoor-outdoor experience, reminiscent of the world's most exclusive residences.

Her 42m² flybridge is a true showpiece, designed with a bespoke configuration that optimises space for an elegant bar and an opulent dining area for 12 guests.

“Prestige and unparalleled craftsmanship”

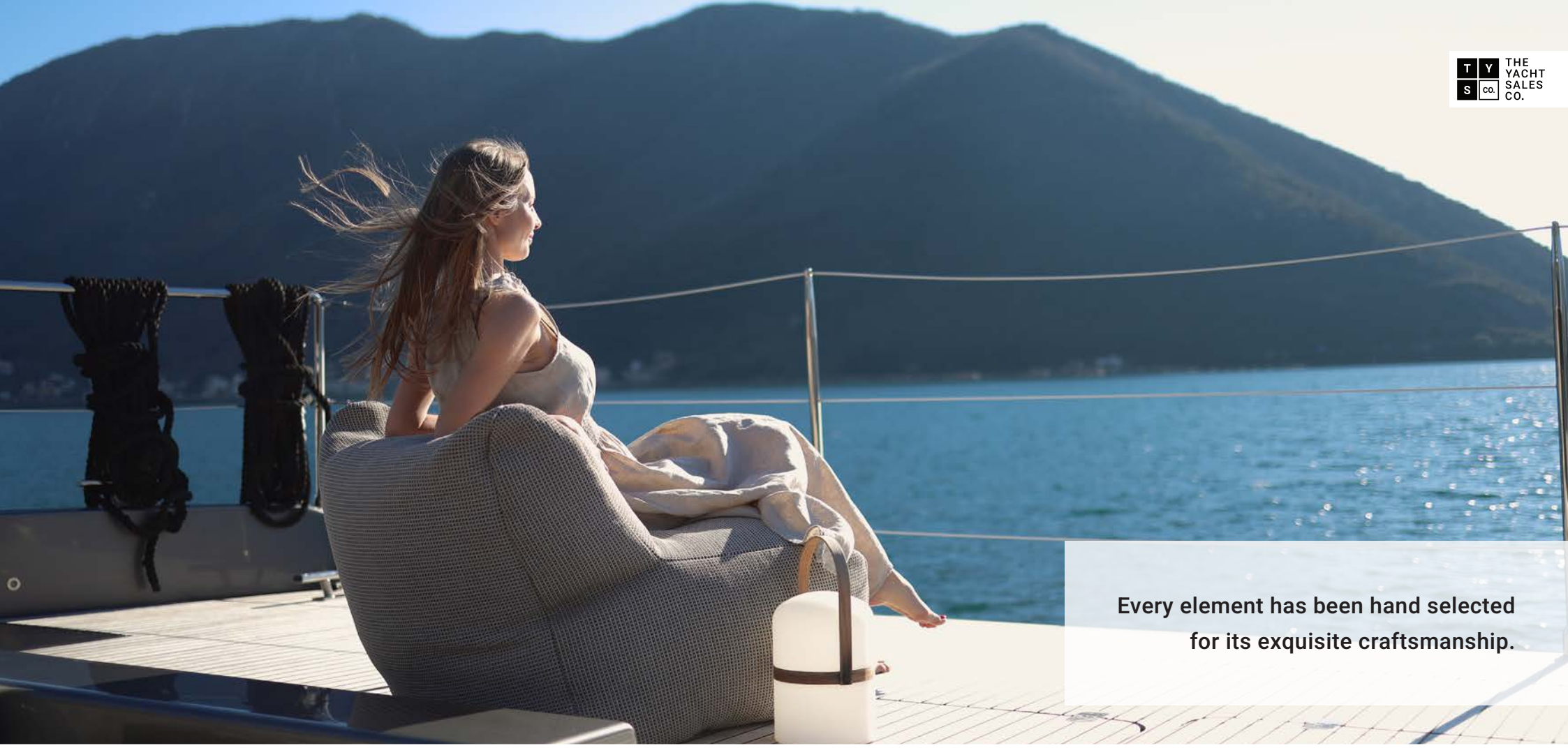
Every element has been hand selected for its exquisite craftsmanship—sintered quartz surfaces, sumptuous Minotti leathers, designer Flexform furnishings, and atmospheric lighting by Christopher Boots, all culminating in an unparalleled couture-style interior, rarely seen at sea.

Powering this masterpiece are twin MAN i6-850 engines, delivering both unwavering reliability and effortless performance. Tested in fierce 60-knot winds, *Saraya* has proven her exceptional seaworthiness, earning accolades from her captain and crew for her flawless handling and robust build.

Her comprehensive amenities include a fully equipped Miele professional kitchen, two air-conditioned crew cabins, and sumptuous social spaces throughout. The sunken bow terrace offers a shaded retreat for tranquil relaxation, while the extra-large hydraulic swim platform serves as a sophisticated waterside lounge, watersports haven, and cradle for the Williams jet tender.

Currently berthed in Porto Montenegro—the world's only platinum marina— *Saraya* is now available for private viewings with The Yacht Sales Co.

Contact our team today to discover why *Saraya* is a statement of prestige and unparalleled craftsmanship.



Every element has been hand selected
for its exquisite craftsmanship.

YEAR
2023

LOA
18.3m / 60ft

BEAM
10.7m / 35ft

DRAFT
1.5m / 4.9ft

DISPLACEMENT (FULL)
90T

CABINS
4 Guest + 2 Crew

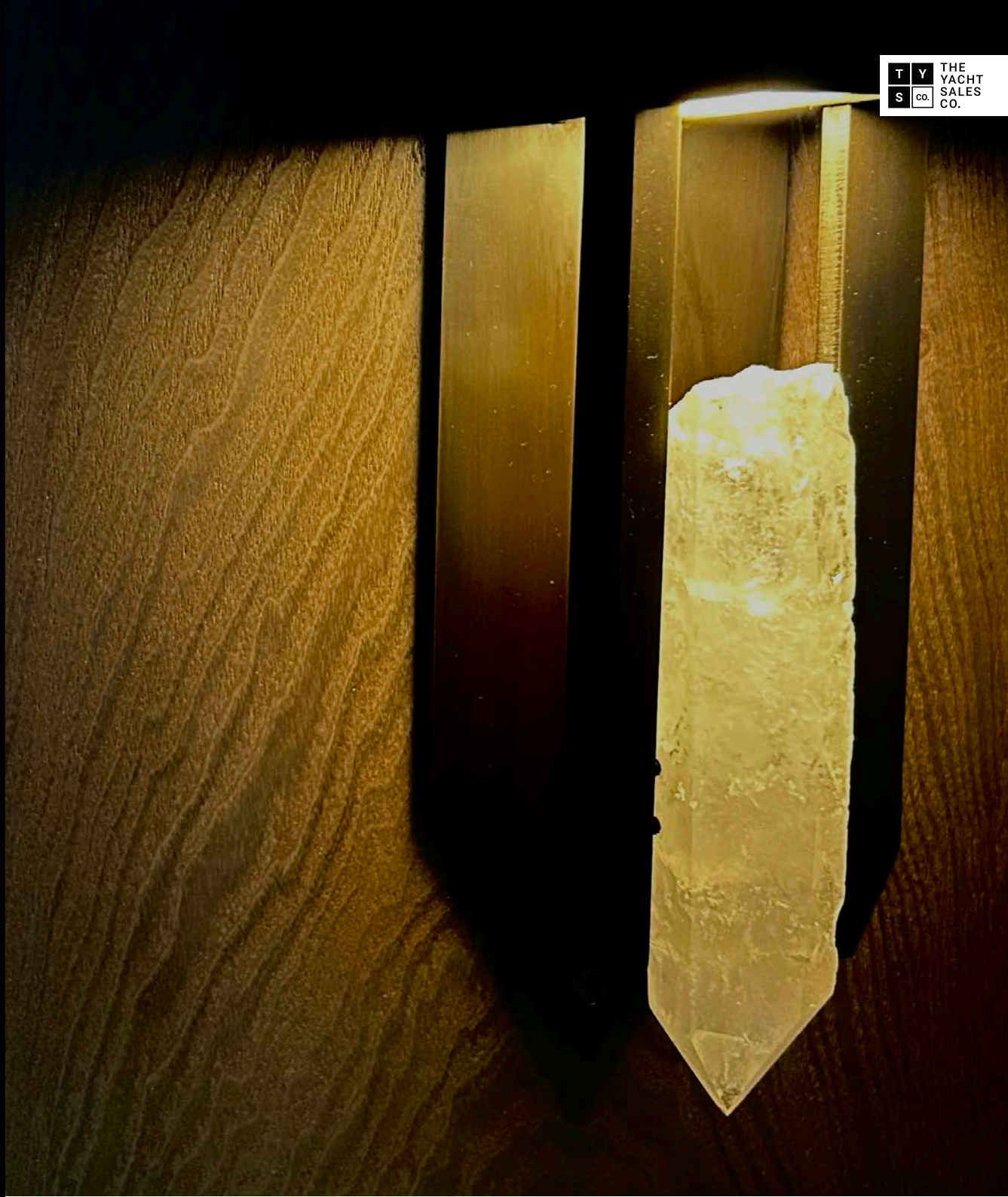
SLEEPS
8 + crew

BATHROOMS
4 + 2 crew

TOTAL LIVING SPACE
257m²

SPECIFICATIONS

Vessel Name	'Sayara'
Make	Sunreef Yachts
Model	P60
Year	2023
Length	18.3m / 60ft
Beam	10.7m / 35ft
Draft	1.5m / 4.92ft
Displacement	90T
Galley Configuration	Galley down
Fuel Capacity	2 x 5000L
Water Capacity	1600L
Construction	Composite Fiberglass
Deck Material	Teak
Keel Type	Mini keels
Designer	Sunreef Yachts
Builder	Sunreef Yachts
HIN	N/A
Place of Registration	Bikini, Marshall Islands
Registration No.	144-23-PY
Lying	Montenegro
No. Helms	2 - flybridge and saloon
Last Antifoul	August 2024
Category	A





ENGINES / STEERING

No engines	2
Engine make	MAN
Engine model	MAN i6-850
Horsepower	850 hp (625 kW)
Engine years	2024 2023
Engine hours	Port - 396 hrs Sbd - 940 hrs
Last service	August 2024
Propellors	Fixed - bronze w/ ropecutters

Fuel consumption	55L/per engine p/hr at 1,300 RPM
Fuel type	Diesel
Max speed	23 knots
Cruise speed	15 knots
Thrusters	Bow thruster on port side
Drive type	Shaft
Steering system	Hydraulic
Engine room	Fully insulated - inc water sensors for fuel filters





ACCOMMODATION

Master Cabin	1 Queen
Guest Cabins	3 Double
Crew Cabins	1 x Single / 1 x Double
Head Height	230cm
Bathrooms	4 + 2 crew
No. Heads	5
Head Type	All electric

GALLEY

Starboard down	Miele microwave
Miele dishwasher	32 bottle wine cooler
Miele front door refrigerator + freezer	Additional fridge & sink in saloon
Miele electric oven	Coffee machine storage
Miele 6-burner induction cooktop with hood	Miele 8Kg + Miele dryer
2 x icemakers	Gas alarm

INTERIOR

Interior deck floor & cockpit bar with metalized lacquer	Electric blinds (plisse) in saloon
Master cabin & guest cabin countertops & floors finished with sintered quartz	Manual Roman blinds in cabins
Christopher Boots lamps	55" television in saloon

EXTERIOR

External hull painting system

- Antifouling (with Epoxy primer)
- Flybridge in white gelcoat
- Side of hulls with metalized lacquer

Deck covering

- Cockpit and skirts floor covered with teak
- Deck covered with teak and installed flush hatches
- Flybridge covered with teak
- Hydraulic platform covered with teak

Deck gear

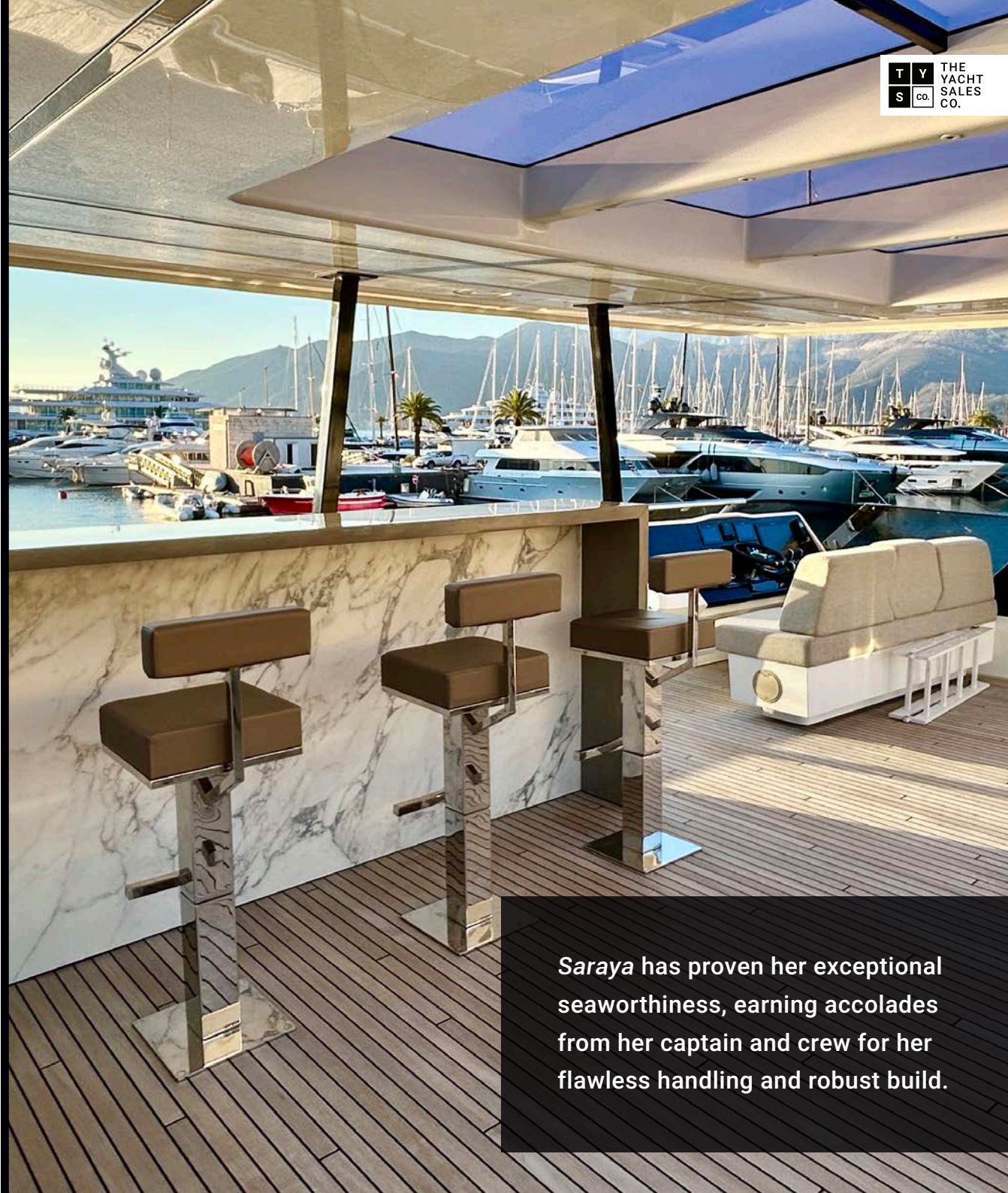
- Flush hatches on deck
- Rigid wave-breaking window on flybridge
- Garage for water toys
- Swim ladder on the skirts
- Hydraulic gangway
- Hydraulic platform 1000kg capacity
- Cockpit windshield-transparent canvas
- Additional 2 x electric mooring aft winch
- Showerhead in cockpit

External doors

- Sliding door from cockpit to saloon (manually operated) - stainless steel frame
- Pantograph electric door to front deck

Open decks furniture

- Sun pad area on aft flybridge
- Extension of the shade on the aft bimini
- Multifunctional full-size rest-lounge with foldable backrest
- Bar module in cockpit with sink with retractable faucet for the bar module, low fridge and ice maker and electric stainless steel BBQ
- Front deck cushions
- Diving bottles holder
- Quartz on cockpit an flybridge table
- Upgraded navigation station seating
- Upgraded aft seating area and extended table on fly-Dotty medium beige exterior pouf
- Chairs upgraded from standard to DedonSeax Lounge Chair (7pcs)



Saraya has proven her exceptional seaworthiness, earning accolades from her captain and crew for her flawless handling and robust build.



POWER, STEERING, MANOUVERING & MOORING EQUIPMENT

2 x MAN i6-850 with pair of propellers	2 electric pumps for changing oil
Speed controls on flybridge & saloon	Throttling valves on gearboxes
Engine room sound insulation	Water sensors for fuel filters

Mooring set (8 x fender, 4 x mooring rope)	Windlass REGAL 2300W 24V
80m chain (diameter 13mm DIN)	Galvanized anchor CQR 66kg 80m chain (13mm)
Ropecutters on propeller shafts	Additional anchor 20kg + 20m galvanized chain (diameter 10mm)



PLUMBING / PIPING SYSTEMS

Fuel System

- 2 x fuel tanks 5,000L each

Bilge system

- 4 x electrical bilge pumps & 2 x manual bilge pumps
- 2 x forepeak bilge pumps (1 per each forepeak)

Fresh water

- Fresh water tank with level indicators (volume 800L)
- Fresh water pressurizing pump
- 2 x fresh water heaters (80L capacity each)
- Fresh water inlet
- Hand shower on deck
- Shower head on the cockpit ceiling with mixing valve
- Watermaker 280l/h - 220V
- Watermaker 95l/h-24V
- Additional fresh water tank

Deck Wash System

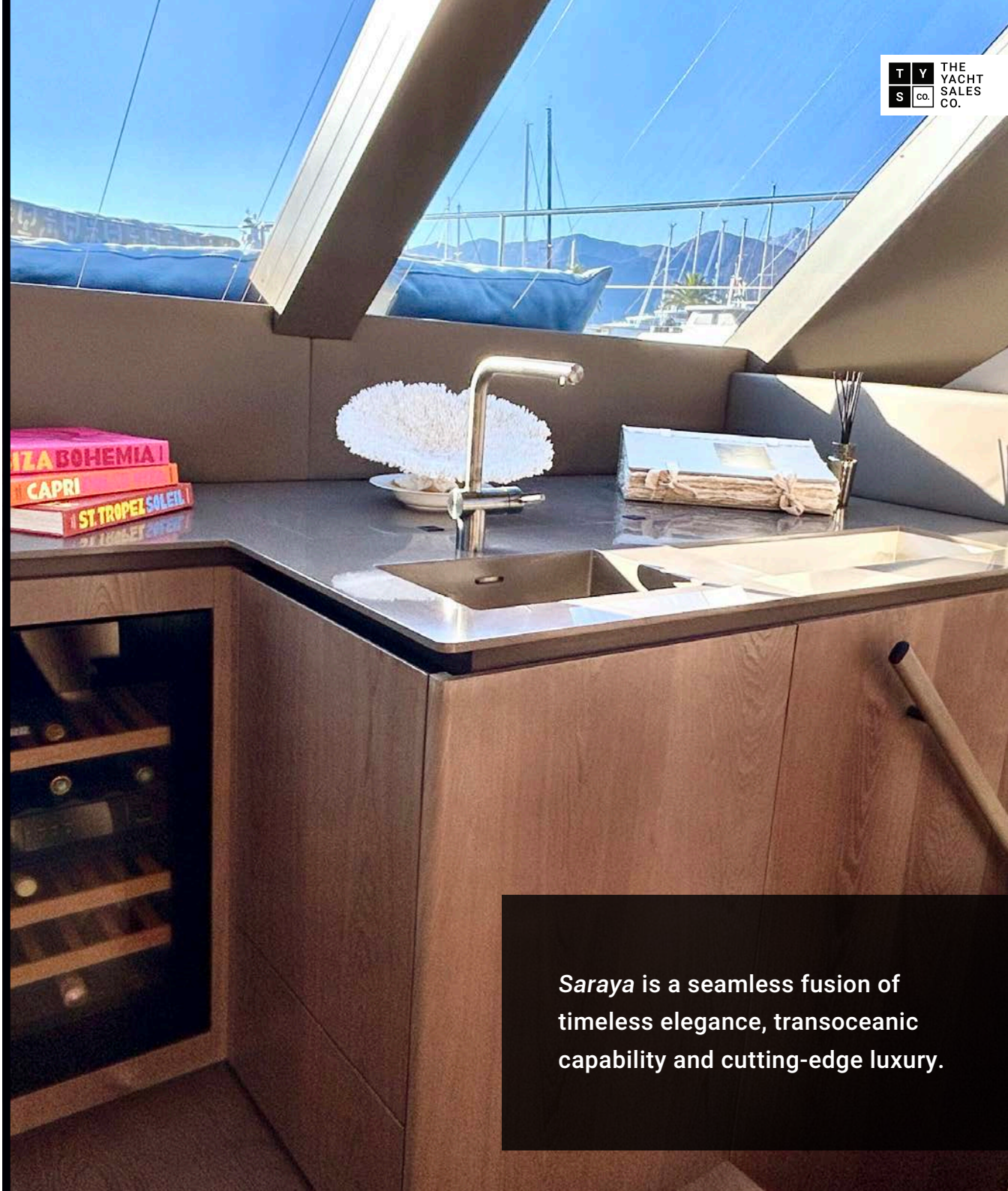
- Pressurized fresh water outlet on cockpit (female quick-coupling snap connector)
- Fresh water outlet for washing the deck
- Retractable hose (5mb) in chain locker for chain wash

Sanitary Drains System

- Blackwater tanks 500L
- Electric toilets 24V in bathrooms with fresh water flush

HVAC System

- Air conditioning system - capacity 160,000 BTU/h
- Air conditioning for forepeaks



Saraya is a seamless fusion of timeless elegance, transoceanic capability and cutting-edge luxury.



ELECTRICAL SYSTEMS

AC distribution system

- Main Switchboard AC 230V @ 50 Hz, 1 phase with extension panel
- Victron Quattro 24V/5000W/120A
- Shore power inlet (32A 230V 50Hz inlet) & shore power cord (1x 20m 3-cond)
- One 230V socket per cabin, two 230V socket in saloon, dining area and galley, 2 x USB socket in each cabin and 2 x in saloon

DC distribution system

- Main Switchboard 25.6V DC
- DC distribution system and wiring
- 7 x Lithium batteries banks (25.6V DC / from 11.2 KWh to 56 Kw/h - night mode)
- Sets of starting batteries for gensets
- 2 x chargers for Genset starting batteries (one per generator: each engine room)
- Generator 1 11KVA, 50Hz, 230V
- Generator 2 - 19KVA, 50Hz, 230V
- Victron Quattro inverter 24V/5000W/120Amp

Night mode

- Night Mode DC-25.6V Lithium battery bank upgrade from 11,2 kWh to 56 kWh, including upgrade of charger and 230V inverter

Domotic Automation

- Lighting with dimming
- Control of valves and pumps of black water
- All tank levels monitoring with alarm
- Battery & charger monitoring with alarm
- Engine room temperature measurement

NAVIGATION/LIGHTING SYSTEMS

Navigation

- Compass (size 135mm)
- Chronometer
- Barometer
- Raymarine navigation package
- 2 x Raymarine Axiom XL 16" Touch Multifunction Displays
- Raymarine RD424HD 24" 4kW 608mm digital radome radar
- Raymarine Depth sounder
- Raymarine Evolution autopilot with wireless controller
- Raymarine AIS700 Automatic Identification System
- Multisensor (depth, speed & temperature sensor)
- Wind sensor
- GPS
- Raymarine Modular Dual-station VHF Radio System Ray 90
- Searchlight with control unit
- Electric fog horn
- Wireless autopilot controller

Lighting System

- Interior lighting with LED lamps
- Lights in engine rooms
- Spotlights on skirt's steps, sidewalks, front terrace deck and cockpit ceiling
- Domotic smart system controlling lights (including dimmers for ceiling lights)
- Exterior lighting package
- Underlighting of fixed furniture on flybridge and cockpit
- 10 x underwater lights LED





AUDIO VISUAL / IT / SAFETY & OTHER SYSTEMS

AV & IT systems

- Yamaha Home Cinema Receiver 7.2 + 5x ceiling speakers + 1x active subwoofer
- 2 waterproof speakers in the cockpit and 2 in the flybridge
- 2 waterproof speakers on front deck
- 4G/LTE Wifi antenna worldwide
- Starlink
- 1 Printer HP OfficeJet 250 Mobile
- Widescreen LED TV 55" with installation (saloon)

Safety equipment

- Automatic fire extinguishers in both engine rooms
- Complete rescue equipment with life-rafts for 16 persons
- EPIRB option MCA
- 2 x manual bilges
- 4 x electric bilges

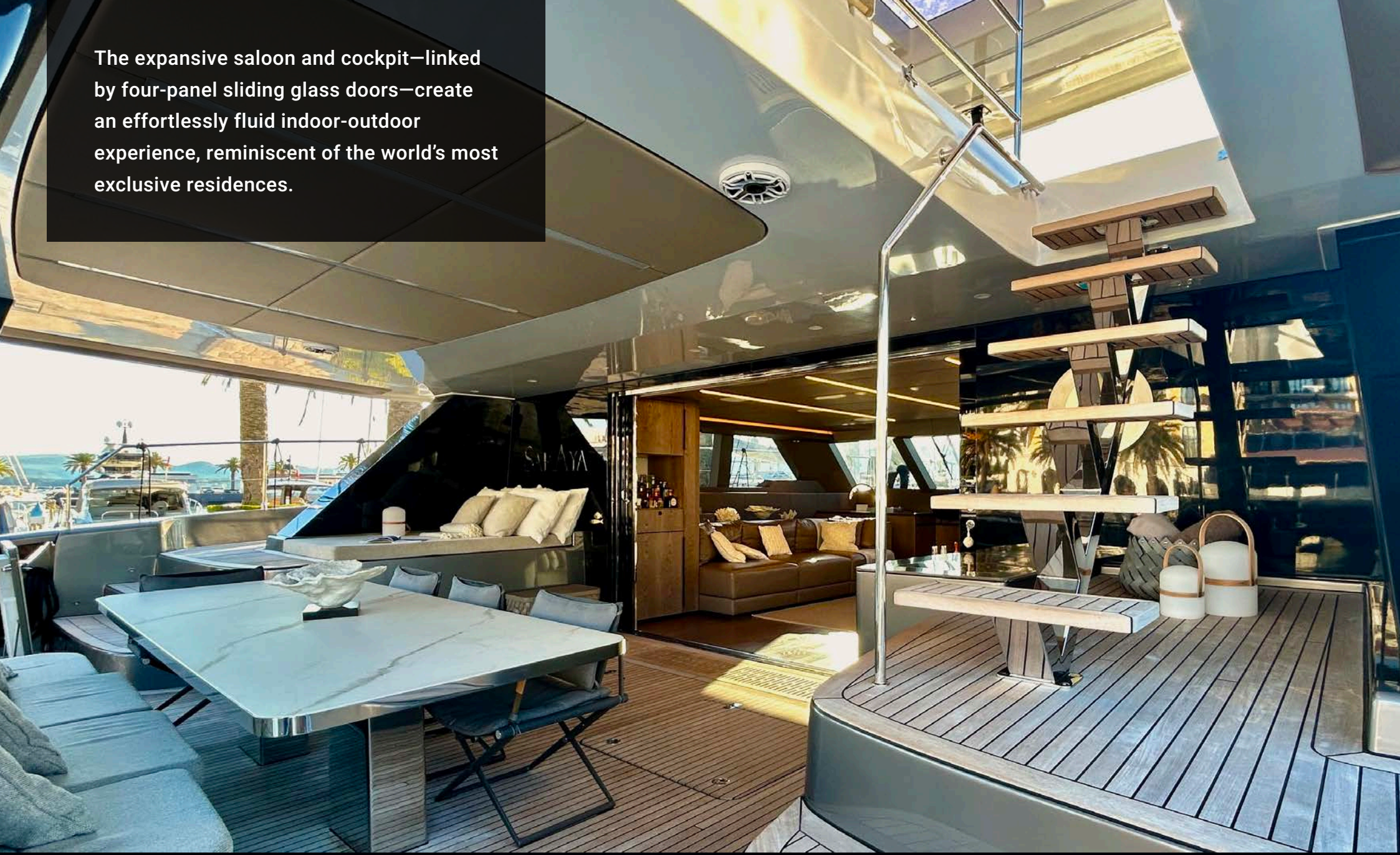
Other


- Williams Sportjet 460 tender with centre console and all accesories
- Antifouling (with Epoxy primer)
- 1,000 kg aft platform
- All-weather full enclosures for cockpit

Disclaimer:

The Yacht Sales Co. offers the details of this vessel in good faith but cannot guarantee or warrant the accuracy of this information nor warrant the condition of the vessel. A buyer should instruct his agents, or his surveyors, to investigate such details as the buyer desires validated. This vessel is offered subject to prior sale, price change, or withdrawal without notice.

The expansive saloon and cockpit—linked by four-panel sliding glass doors—create an effortlessly fluid indoor-outdoor experience, reminiscent of the world's most exclusive residences.



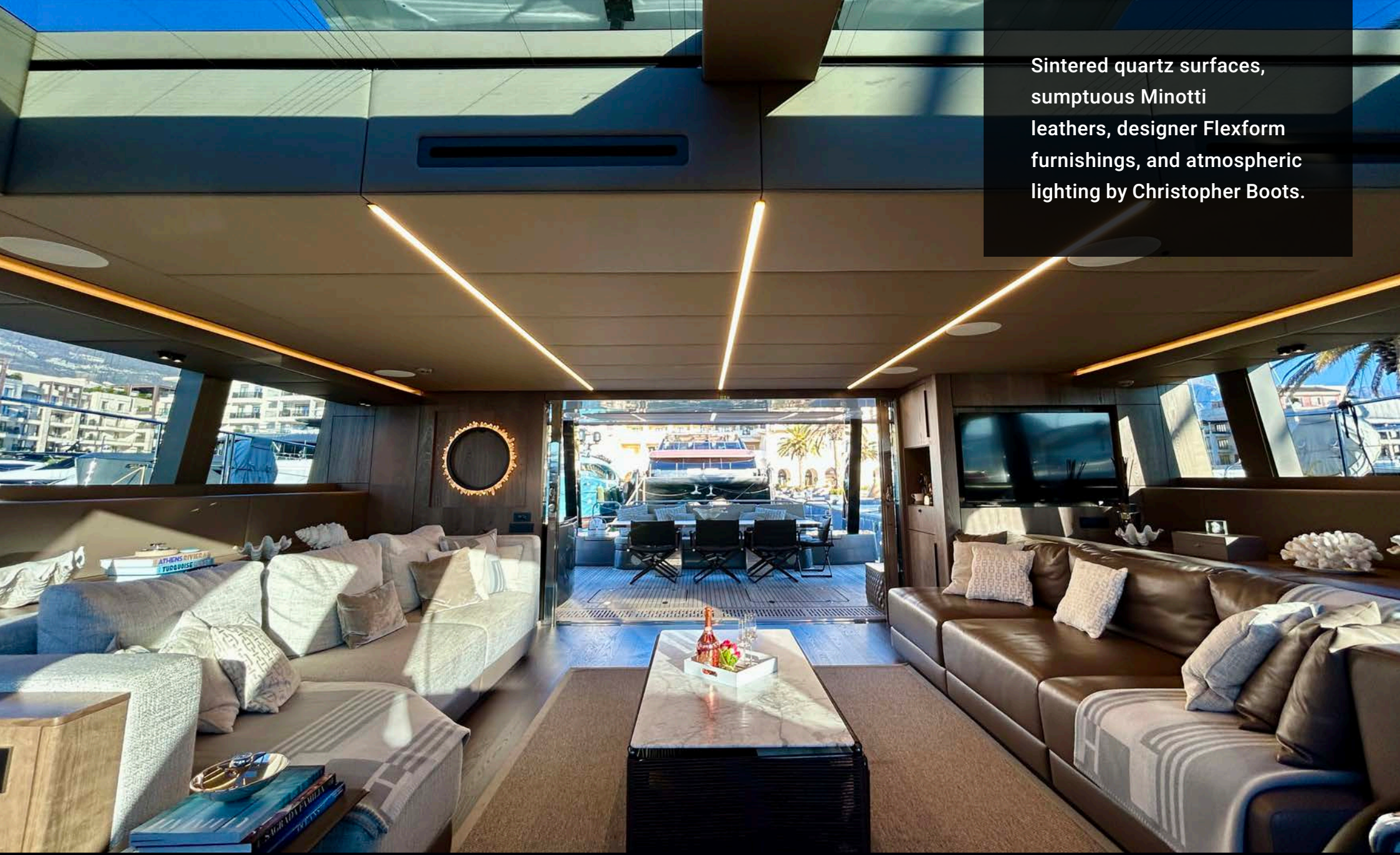


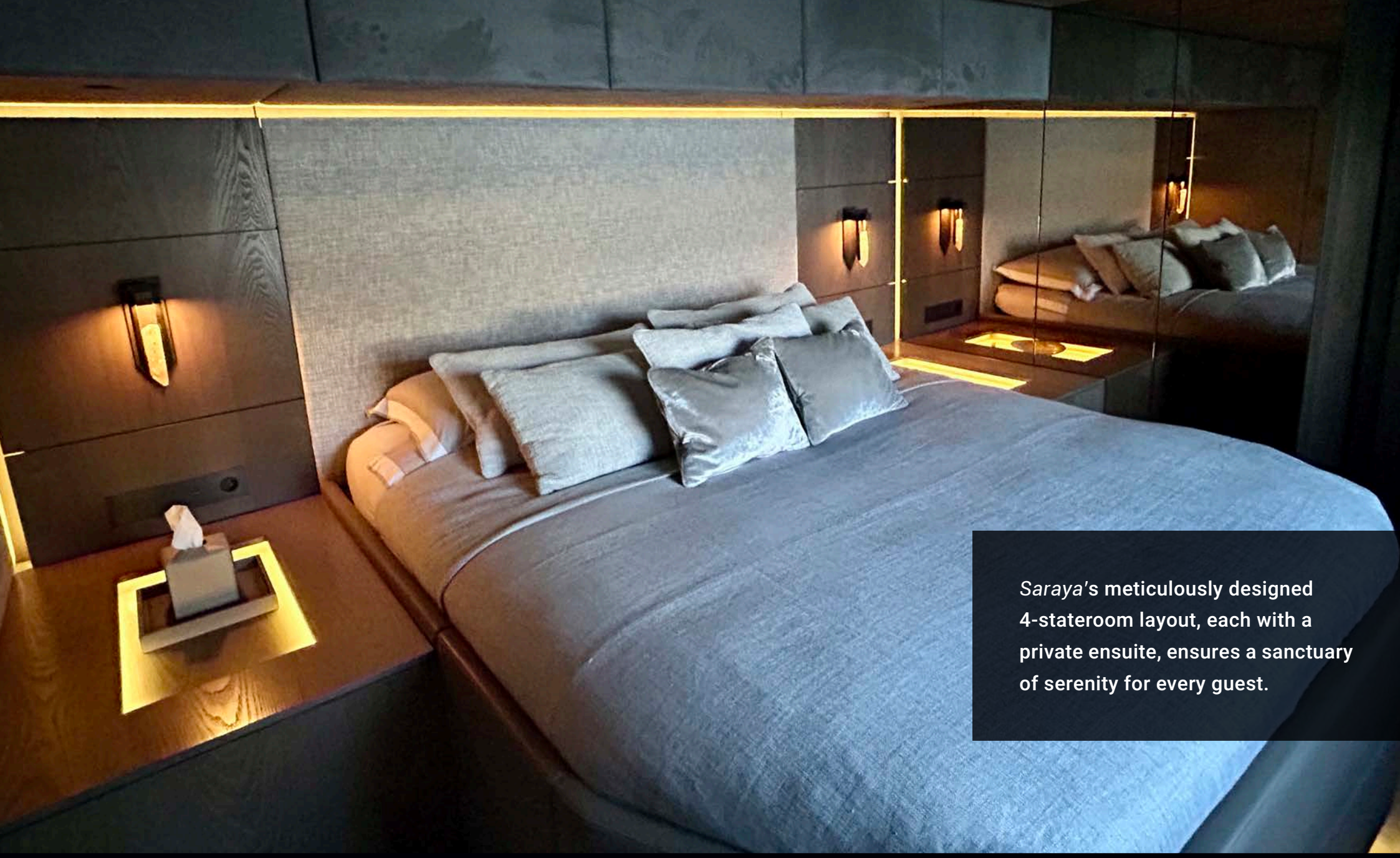
The sunken bow terrace is a spacious retreat for tranquil relaxation.

Saraya features a luxurious
couture-style interior with the
finest in finishes.



Sintered quartz surfaces,
sumptuous Minotti
leathers, designer Flexform
furnishings, and atmospheric
lighting by Christopher Boots.



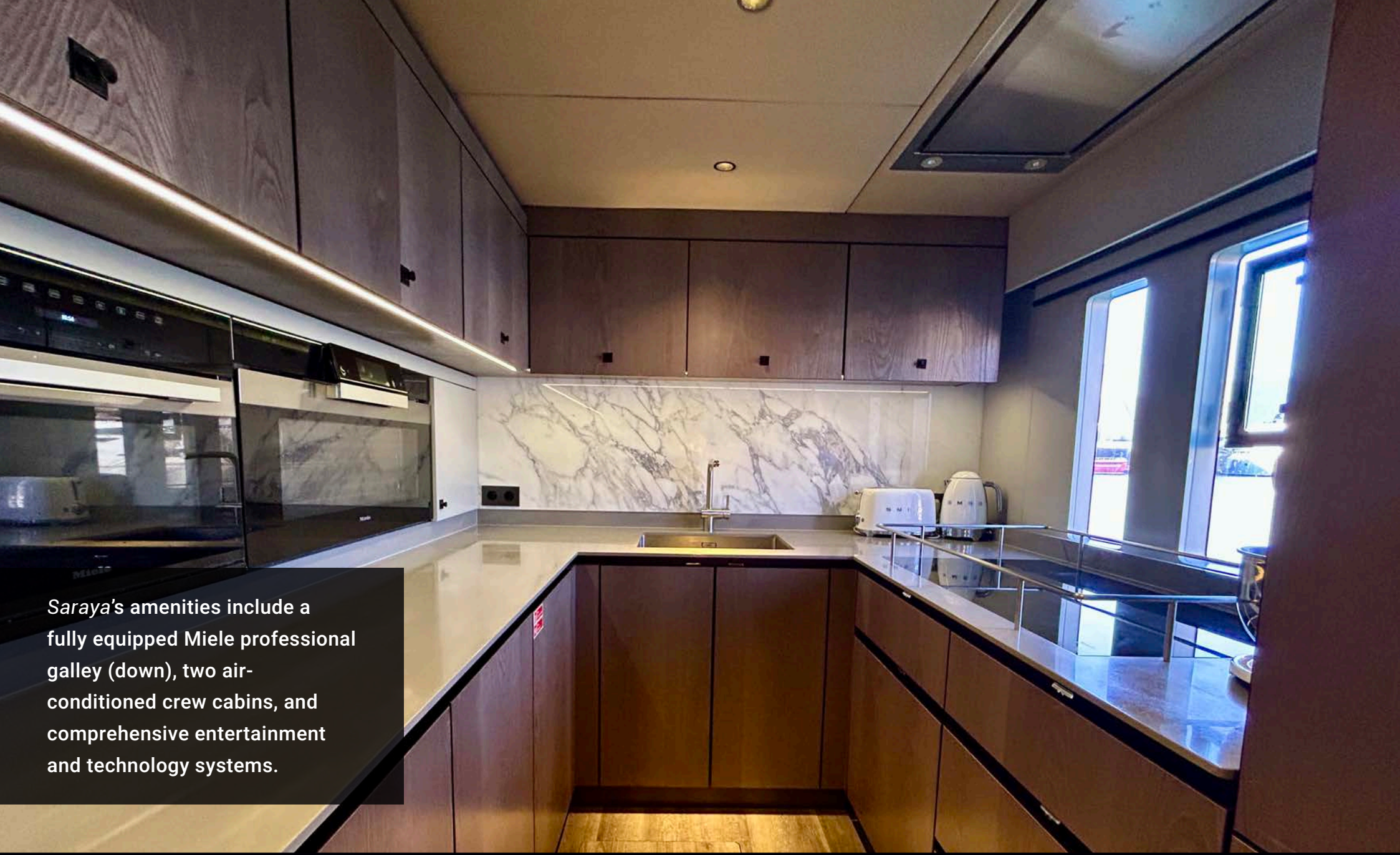


Saraya's meticulously designed 4-stateroom layout, each with a private ensuite, ensures a sanctuary of serenity for every guest.









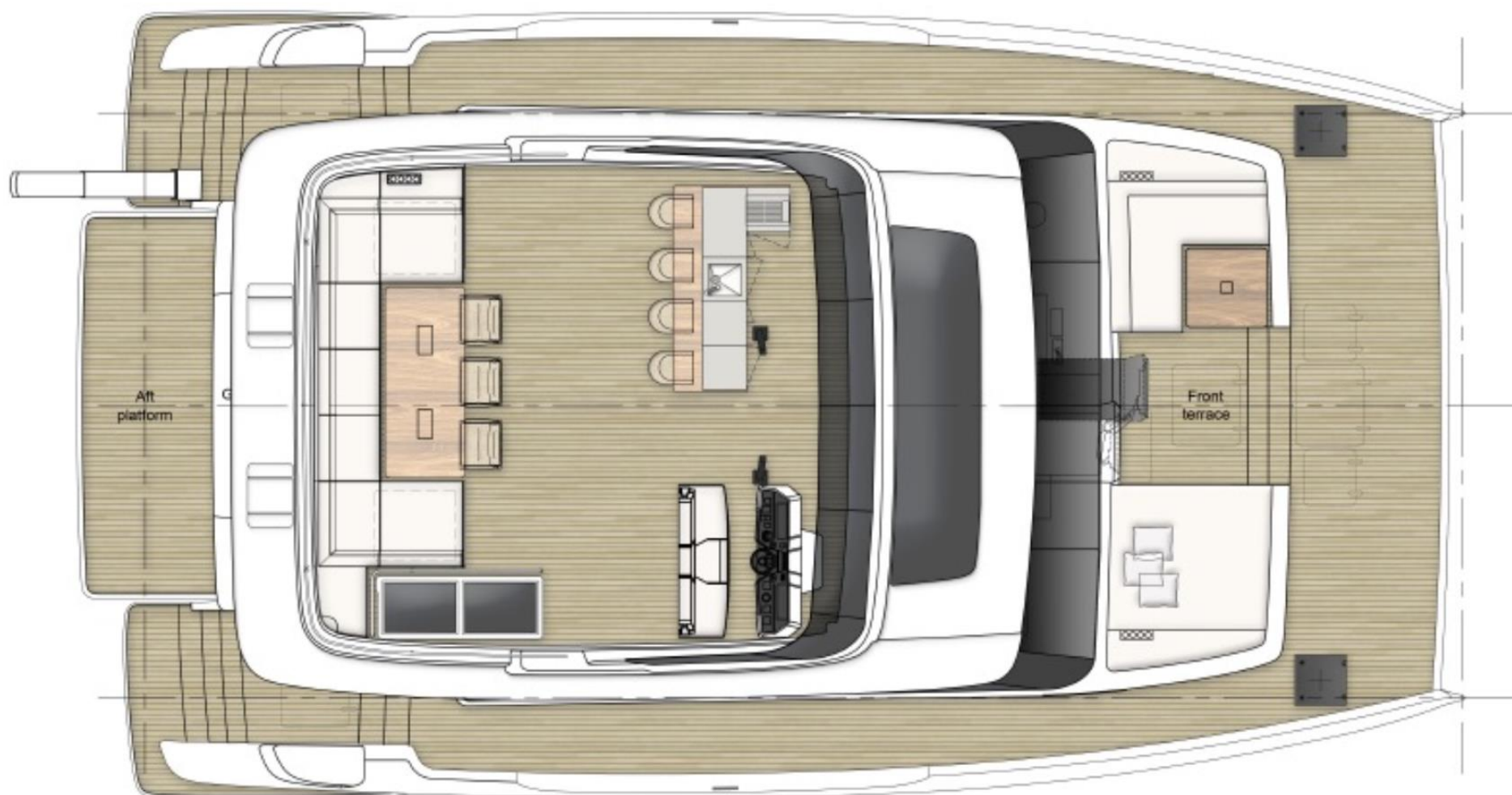
Saraya's amenities include a fully equipped Miele professional galley (down), two air-conditioned crew cabins, and comprehensive entertainment and technology systems.



Her 42m² flybridge is a true showpiece, designed with a bespoke configuration that optimises space for an elegant bar and an opulent dining area for 12 guests.









Fabian Courtaux
SENIOR SALES CONSULTANT
MONTENEGRO

T: +382 6952 6825

E: fabian@yachtsalesco.com

Based in the prestigious Porto Montenegro - a stunning platinum marina and hidden gem for Mediterranean cruisers - Fabian and his team are strategically positioned to offer world-class services to yacht buyers.

Born in France, Fabian built his maritime career by leading the activities of DCNS Naval Group in South America for over a decade. Upon relocating to Australia, where he lived for 14 years, Fabian founded Trusted Negotiator, a successful business focused on high-stakes negotiations where he coached executives in closing major deals across various industries.

Now a Senior Sales Consultant for The Yacht Sales Co. based in Montenegro, Fabian has merged his yachting passion with his sales expertise.

Fluent in English, French, Italian, and Spanish, and with years of global experience, Fabian expertly guides clients through the sales process, providing professional, ethical and open communication to ensure a seamless sales experience.

Find out more about The Yacht Sales Co. and our international team at [**yachtsalesco.com**](https://yachtsalesco.com).



yachtsalesco.com



info@yachtsalesco.com | + 382 6952 6825

YACHTSALESCO.COM